



ZAMIAS SERVICES INC

Greater Lewistown Plaza

222 N Logan Blvd | Burnham, PA

975 - 2,595 SF AVAILABLE FOR LEASE

4,906 SF OUTPARCEL AVAILABLE FOR LEASE OR SALE

PRESENTED BY ZAMIAS SERVICES INC

P.O. BOX 5540
JOHNSTOWN, PA 15904
P 814.535.3563 | E INFO@ZAMIAS.NET
ZAMIAS.COM



PROPERTY OVERVIEW

Greater Lewistown Plaza is a 177,752 SF shopping center anchored by Weis Markets in the main retail corridor of Burnham, PA. The property is located at the intersection of Logan Blvd & Freedom Ave, with over 16,600 VPD combined, and less than 1 mile off of the Burnham exit of US Routes 22-322.

Greater Lewistown Plaza features an available 4,906 SF outparcel for lease and is occupied by a mix of national and regional tenants such as: Weis Markets, Dunham's Sports, JCPenney, Goodwill, Anytime Fitness, Geisinger Careworks, Rent-A-Center, Edward Jones, and a Citizen's Bank outparcel.

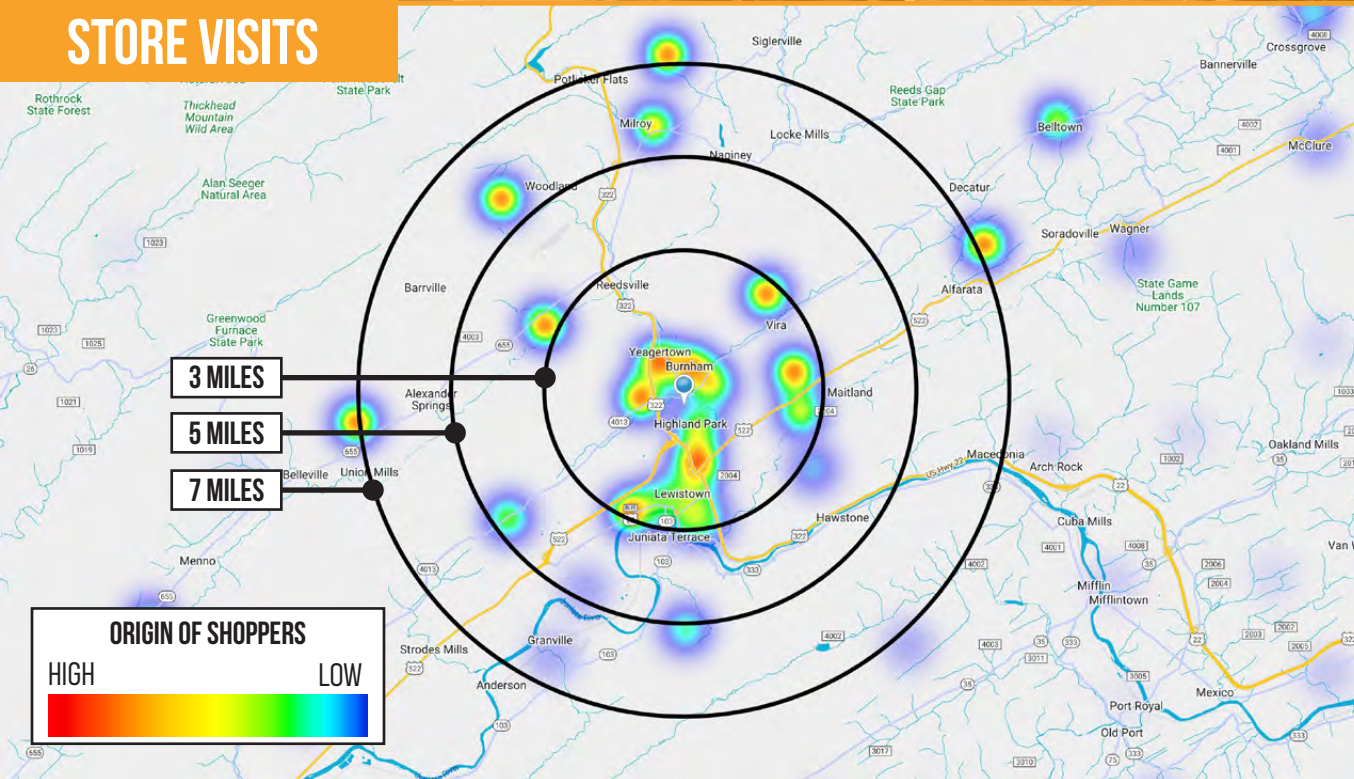


LOCATION

Burnham is a borough of Mifflin County located in central Pennsylvania and is approximately 3 miles north of the county seat of Lewistown. The city of Lewistown is known for its historical downtown area and its proximity to the Tuscarora Mountains.

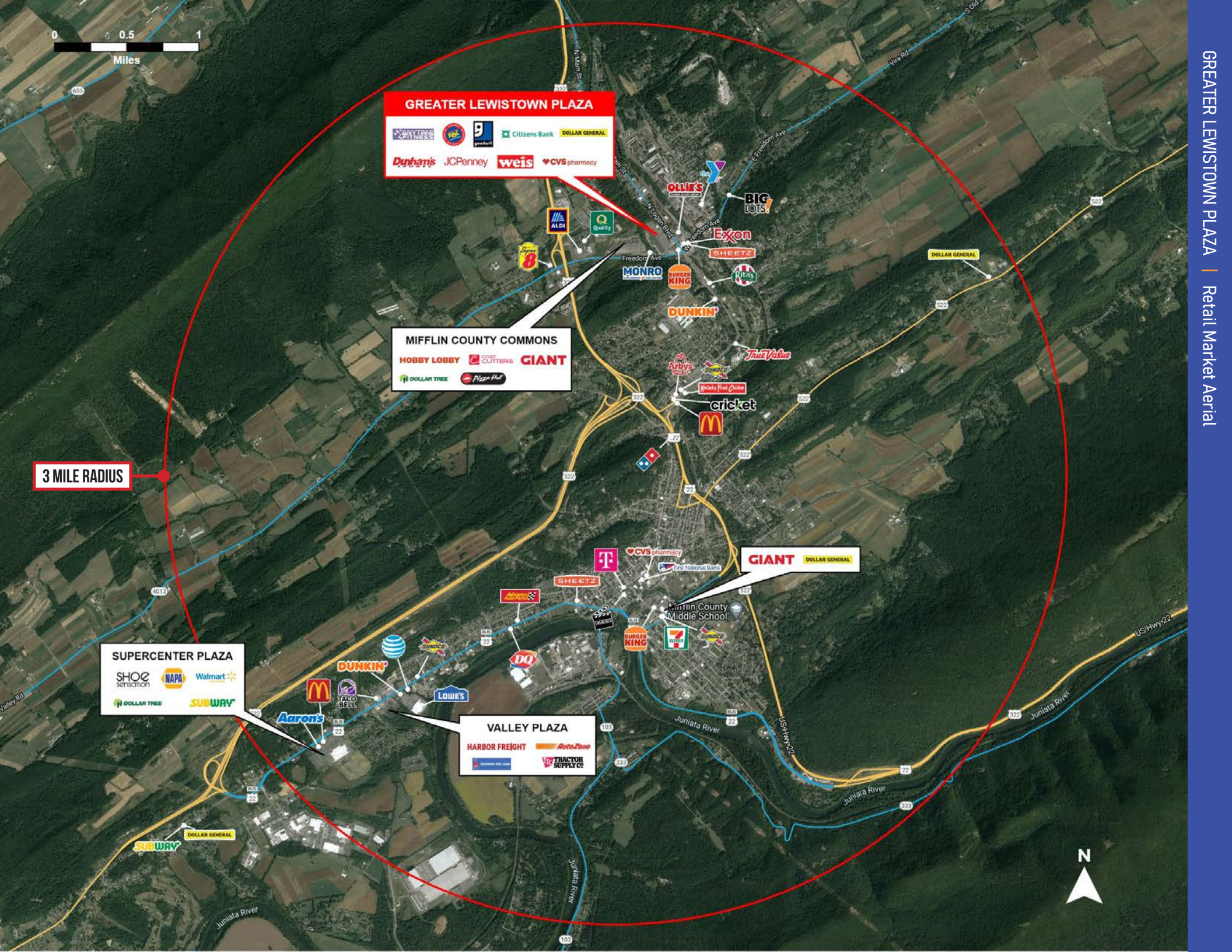
The local economy is anchored by healthcare and manufacturing industries and, today, the area is seeing a boom in new small businesses by young entrepreneurs including restaurants and retail. The enhancement of US 322 between Lewistown and State College was completed in 2020 to better connects the two communities.

STORE VISITS



DEMOGRAPHICS	3 MILES	5 MILES	7 MILES
POPULATION	17,800	24,932	30,894
EMPLOYEES	10,089	13,183	14,514
AVG HHI	\$63,496	\$66,627	\$68,189
HOUSEHOLDS	7,710	10,681	13,082

 **N LOGAN BLVD: 8,749 VPD | FREEDOM AVE 7,922 VPD**
Source: SitesUSA.com



GREATER LEWISTOWN PLAZA

- CVS pharmacy
- Citizens Bank
- DOLLAR GENERAL
- Dunham's
- JCPenney
- weis

MIFFLIN COUNTY COMMONS

- HOBBY LOBBY
- GIANT
- DOLLAR TREE
- Pizza Hut

GIANT

- DOLLAR GENERAL

SUPERCENTER PLAZA

- SHOE sensation
- NAPA
- Walmart
- DOLLAR TREE
- SUBWAY

VALLEY PLAZA

- HARBOR FREIGHT
- AutoZone
- TRACTOR SUPPLY CO.

3 MILE RADIUS

0 0.5 1
Miles

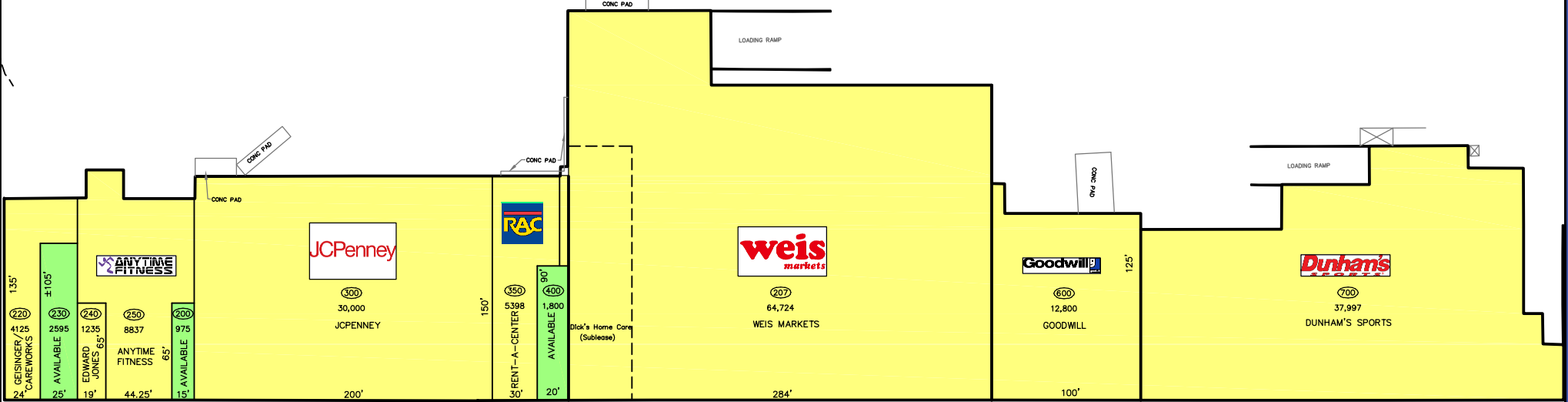
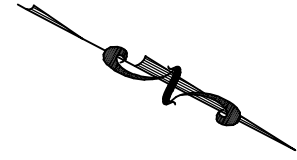




COLOR KEY

- OCCUPIED
- VACANT

NOTE:
 THIS SITE PLAN SHOWS ONLY THE APPROXIMATE LOCATION OF THE DEMISED PREMISES IN THE PROJECT. LESSOR RESERVES THE RIGHT TO CHANGE THE TENANTS NAMES & LOCATIONS OF OTHER TENANTS, PROVIDED THE PARKING AREA IS NOT SUBSTANTIALLY REDUCED. LESSOR ALSO RESERVES THE RIGHT TO CHANGE PARKING ARRANGEMENTS, ENTRANCES, EXITS, SERVICE AREAS, ETC. LESSOR MAKES NO REPRESENTATION THAT THE PREMISES WILL BE OCCUPIED AS SHOWN, BUT ONLY INTENDS TO SHOW WHAT MAY BE DEVELOPED IN THE PROJECT. ANY COVENANTS WITH REFERENCE TO WHAT OTHER TENANTS MAY OCCUPY SPACE IN THE PROJECT MUST APPEAR IN THE WRITTEN BODY OF THE LEASE.

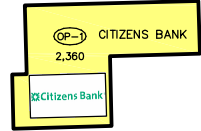
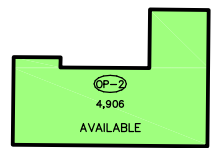


DEVELOPMENT DATA

JCPENNEY	-----	30,000	S.F.
WEIS MARKETS	-----	64,724	S.F.
GOODWILL	-----	12,800	S.F.
DUNHAM'S	-----	37,997	S.F.
SMALL SHOPS	-----	24,965	S.F.
TOTAL LEASABLE AREA	-----	170,486	S.F.

OUT PARCELS

OP-1 CITIZENS BANK	-----	2,360	S.F.
OP-2 AVAILABLE	-----	4,906	S.F.
OVERALL LEASABLE AREA	-----	177,752	S.F.

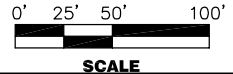


LEASE PLAN
 FOR
GREATER LEWISTOWN PLAZA
 224 NORTH LOGAN BOULEVARD, BURNHAM, PA 17009

MANAGED BY
ZAMIAS SERVICES INC

P.O. BOX #5540
 JOHNSTOWN, PA 15904
 TELE: (814)535-3563

DATE: JANUARY 24, 2023



SCALE

NOTE:
THIS SITE PLAN SHOWS ONLY THE APPROXIMATE LOCATION OF THE DEMISED PREMISES IN THE PROJECT. LESSOR RESERVES THE RIGHT TO CHANGE THE TENANTS NAMES & LOCATIONS OF OTHER TENANTS. PROVIDED THE PARKING AREA IS NOT SUBSTANTIALLY REDUCED. LESSOR ALSO RESERVES THE RIGHT TO CHANGE PARKING ARRANGEMENTS, ENTRANCES, EXITS, SERVICE AREAS, ETC. LESSOR MAKES NO REPRESENTATION THAT THE PREMISES WILL BE OCCUPIED AS SHOWN, BUT ONLY INTENDS TO SHOW WHAT MAY BE DEVELOPED IN THE PROJECT. ANY COVENANTS WITH REFERENCE TO WHAT OTHER TENANTS MAY OCCUPY SPACE IN THE PROJECT MUST APPEAR IN THE WRITTEN BODY OF THE LEASE.

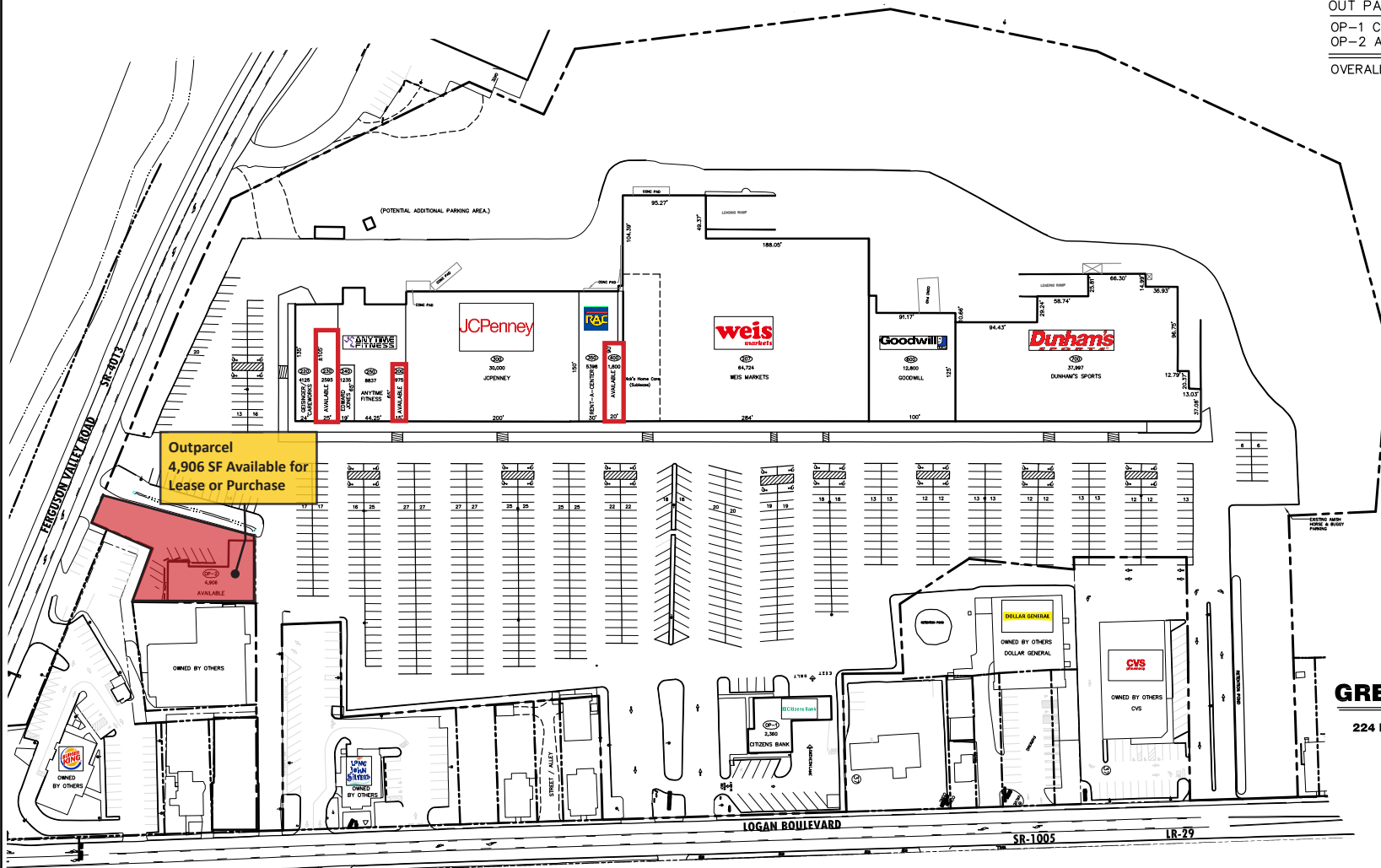
DEVELOPMENT DATA

JCPENNEY	30,000 S.F.
WEIS MARKETS	64,724 S.F.
GOODWILL	12,800 S.F.
DUNHAM'S	37,997 S.F.
SMALL SHOPS	24,965 S.F.
TOTAL LEASABLE AREA	170,486 S.F.

OUT PARCELS

OP-1 CITIZENS BANK	2,360 S.F.
OP-2 AVAILABLE	4,906 S.F.

OVERALL LEASABLE AREA -----177,752 S.F.

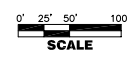


PLOT PLAN FOR GREATER LEWISTOWN PLAZA

224 NORTH LOGAN BOULEVARD, BURNHAM, PA 17009

MANAGED BY
ZAMIAS SERVICES INC

P.O. BOX #5540
JOHNSTOWN, PA 15904
TELE: (814)535-3563



REVISIONS	DATE: 01/24/2023
	PP-1

ZAMIAS SERVICES INC | P.O. BOX 5540, JOHNSTOWN, PA 15904 | 814-535-3563 | ZAMIAS.COM



CONTACT US

PERRY RUSS

President

814.532.6186 | pruss@zamas.net

CINDY LINDROSE

Vice President of Specialty Leasing

814.532.6166 | clindrose@zamas.net

